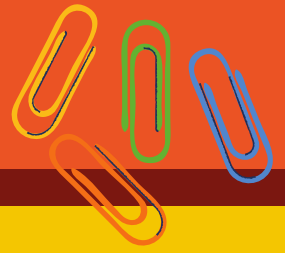




SIS NEWSLETTER

November 2024



LAST DAY OF TERM

The last day of the term is on Friday 20th December. Children will finish school at the normal time on this day.

We return for Term 3 on Monday 6th January 2025. Please note that Sandwich Junior School have a School Development Day on this day.



AUTHOR VISIT

We loved our special visit from Steve Clifford last month. It was brilliant to see the children so enthused in the writing workshops and showing him how much of a love for reading they have. A big thank you to everyone that purchased books from him.



WINTER GUIDANCE

With the recent strong winds and change in weather, I would like to think ahead to any potential severe weather plans. As in previous years, we will analyse the situation and inform of any changes/ closures as they happen. All communication will be sent out as a notification on MCAS so it is important that your app is installed and working.

We had two new boilers installed last year so we are hoping for a seamless winter (fingers crossed!)

NEW STARTERS 2025

Do you know of anyone that has a child due to start school in September 2025?

Next term we will continue our show rounds for prospective parents.

Please ask them to phone the school office to book in for a tour.

Applications should be made via KCC website by Wednesday 15th January. This includes applications for Junior School.

YOUNG CARERS



A Young Carer is a child aged 5–18yrs who provides a form of care, supervision or emotional support, usually to a family member who may have:

- A long-term health condition, illness or frailty
- Physical Disability
- Neurodevelopmental Disorder
- Poor mental health
- Substance misuse issue

Imago provides a range of support for young Carers in Kent. Imago explains that when we talk about carers, many will think of those who visit homes to help elderly, frail or physically disabled adults to get out of bed, washed, dressed and fed. While many young people are also providing this physical and practical care, it is important to also be mindful of young people who provide emotional support and are often equally impacted by this.

There are many benefits of making a referral to Imago including that on the child's education, wellbeing and social interaction.

If you would like us to make a referral on your behalf, or to discuss this further, please contact the school office.

STAFFING

There are a couple of staffing changes happening over the next term. We will unfortunately have to say goodbye to Miss Worthington on 11th November. Miss Worthington has been a passionate, supportive and inspiring member of our team for 3 years, working as a teaching assistant.

We will also be saying goodbye to Mrs Parker on 17th December. Mrs Parker has had many roles with us including a teaching assistant, Fun Club assistant and midday meal supervisor. We wish both ladies the best of luck in their new ventures.

Whilst we say goodbye to two valuable members of staff, we welcome Mrs Lejeune and Mrs Feely. Both will be joining our Reception team.

FOREST SCHOOL

We are very excited to be offering Forest School provision this year as a way of enhancing the opportunities that we give to our children. Foxes are thoroughly enjoying their sessions. Mrs Prestleton offers a range of planned activities each week, which has so far included talking about staying safe in forest school, looking for and marking hazards, playing in the new mud kitchen – written menu's and signs, climbing trees and building shelters. They have looked at animals and talked about their habitats, then made houses/shelters for them.

Last week they used tools – long handled loppers and secateurs to cut sticks, then peelers to whittle with – creating small figures/pencils.

Thank you to FOSIS for allowing us to purchase some equipment for our Forest School provision.



FOSIS

The Friends of Sandwich Infant School are seeking support in planning and delivering events for the children throughout the year. If you have any 'spare' time that you can offer, please contact the school office on office@sandwich-infant.kent.sch.uk.

FOSIS raise extra funds through a wide range of fun and creative initiatives, events, and much, much more. This year we are hoping to raise money for:

- Picnic benches
- Forest School equipment
- Panto and other experiences
- Reading fluency books

BRITISH GAS

Last week we had Matt from British Gas in, along with a videographer to create further footage for the celebration of winning the £15,000 energy grant. We look forward to getting new LED lighting and sensor lights in parts of the school.

ATTENDANCE

Attendance to date:

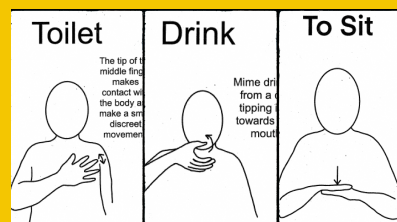
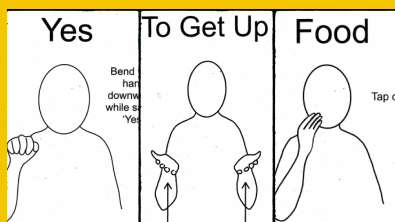
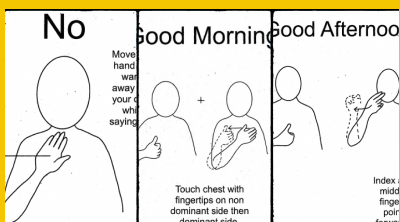
Foxes – 96%
Squirrels – 97%
Otters – 95%
Rabbits – 90%
Robins – 94%



Any requests for leave during term time must be applied for in advance via the Request to Remove a Child from Education form available within the Attendance section on the school website or a hard copy can be requested from the school office.

MAKATON

The children have been learning Makaton this year and have been effectively using this in school to support communication.



DIARY DATES

Tuesday 3rd December	Christmas Show (1:30 pm start)
Friday 6th December	Year 2 Sing for Pfizer Christmas lunch (children only)
Tuesday 12th December	FOSIS Christmas Fair Year 2 singing at Age Concern
Wednesday 18th December	Christmas dinner and jumpers
Friday 20th December	Last day of term 2
Friday 20th December	Class Christmas parties

Monday 6th January	Term 1 starts
Monday 6th January	2:55 pm Book Share
Friday 10th January	Parent representative meeting Dog Safety workshops
Tuesday 21st January	Panto
Friday 26th January	Reception Big garden Bird watch
Monday 3rd February	Children's mental health activity day
Friday 7th February	Lenny the letter Open afternoon 2:00 pm
W/c: 10th February	Community week/ Safety week
Tuesday 11th February	Safer internet day
Thursday 13th February	Last day of Term 3
Friday 14th February	INSET day

Please keep an eye out for updates, changes and reminders via MCAS and the school website.

